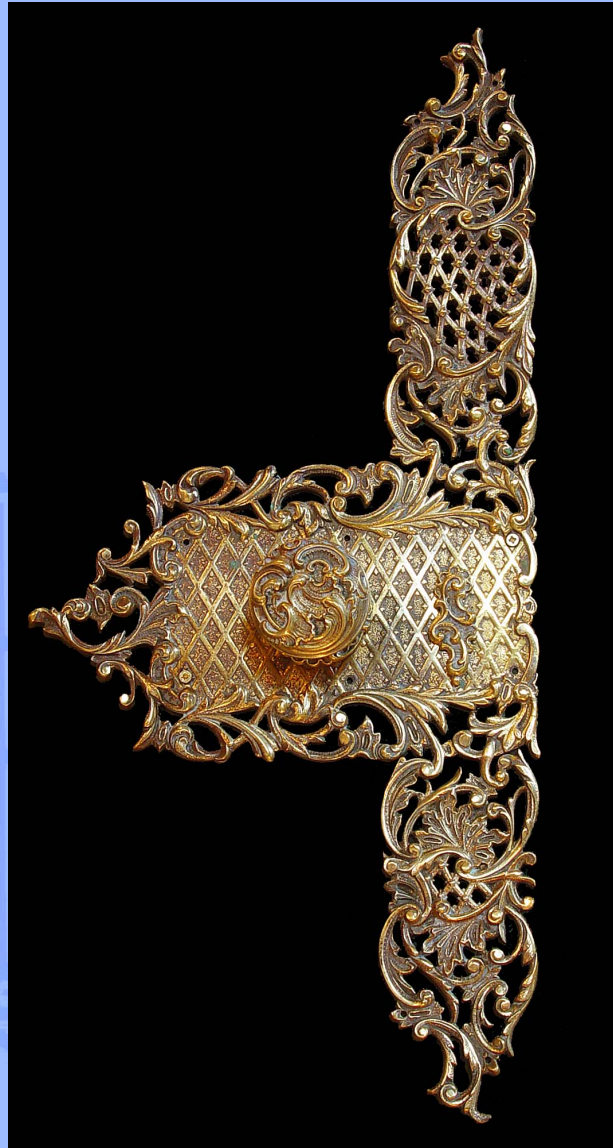


WESTLAND ★ LONDON_{EC2}

ANTIQUE PRESTIGIOUS CHIMNEYPICES ★ FIREGRATES ★ ORNAMENTATION ★ ARCHITECTURAL ELEMENTS



8028. A 19th century cast brass door plate, double sided, with pierced diaper, acanthus leaf and c-scroll decoration.

Stamped WT&S Foundry no. 167129.

Link to: [Antique Doors and Windows.](#)

Width
10.63"
27cm

Height
23.23"
59cm

Depth
2.36"
6cm