

# WESTLAND ★ LONDON EC2

ANTIQUE PRESTIGIOUS CHIMNEYPICES ★ FIREGRATES ★ ORNAMENTATION ★ ARCHITECTURAL ELEMENTS



14691. A pair of Neoclassical style twin branch wall lights with flambeau topped and swagged urn finials above tapering reeded stems from which emanate foliate drapes and the scrolling arms supporting urn candle holders. English, mid 20th century.

Link to: [Antique Wall Lights](#)

Width  
11.02"  
28cm

Height  
15.75"  
40cm

Depth  
4.33"  
11cm

# WESTLAND ★ LONDON EC2

ANTIQUE PRESTIGIOUS CHIMNEYPICES ★ FIREGRATES ★ ORNAMENTATION ★ ARCHITECTURAL ELEMENTS



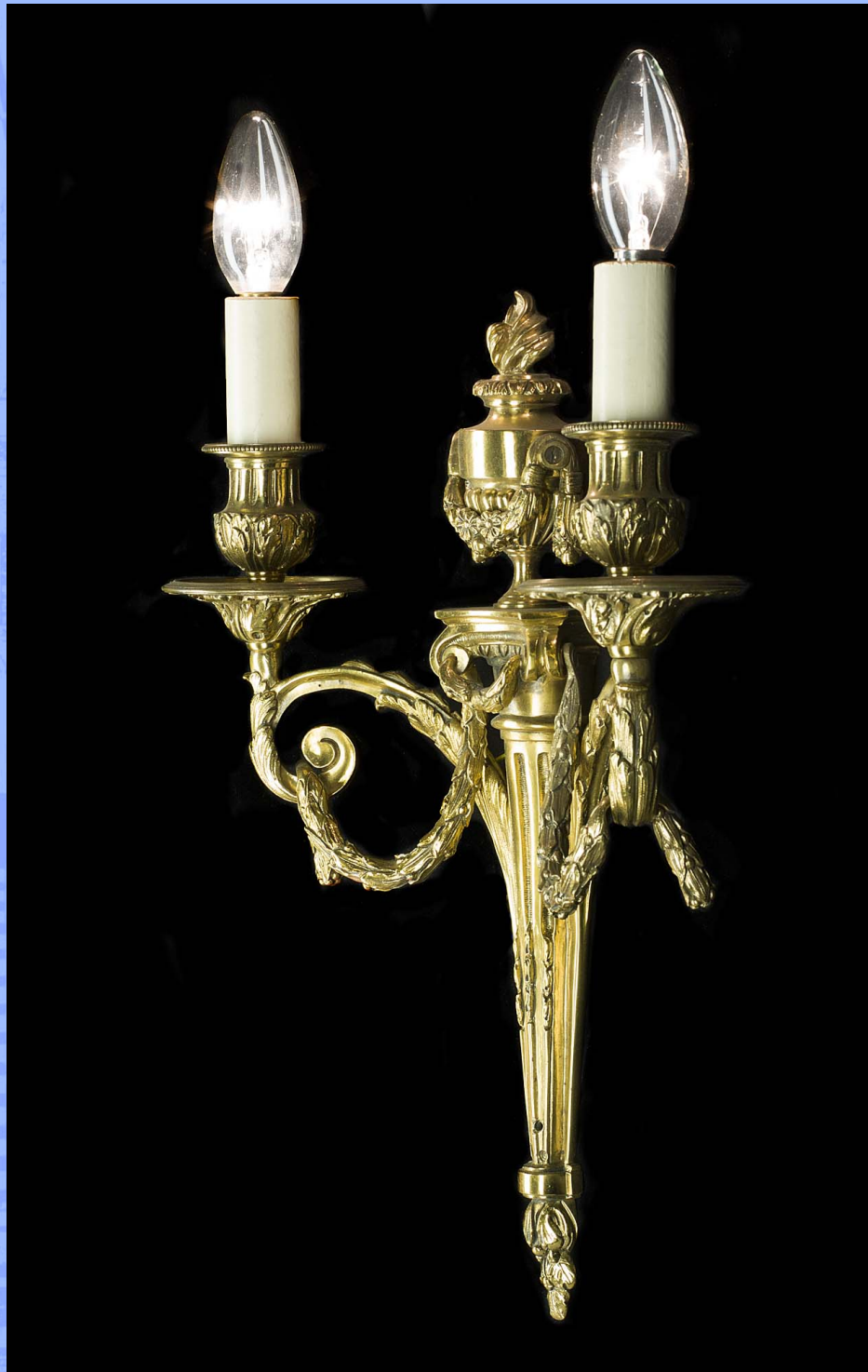
ST MICHAEL'S CHURCH  
LEONARD STREET, LONDON, EC2A 4QX  
(OFF GREAT EASTERN ST) TUBE: OLD STREET, EXIT 4

PLEASE VIEW OUR FULL COLLECTION AT:  
[www.westlandlondon.com](http://www.westlandlondon.com)  
AT ST MICHAEL'S CHURCH

TEL: +44 (0)207 739 8094  
e-mail: [westland@westlandlondon.com](mailto:westland@westlandlondon.com)  
OPEN: MON - FRI 9-6. SAT 10-5.

# WESTLAND ★ LONDON EC2

ANTIQUE PRESTIGIOUS CHIMNEYPieces ★ FIREGRATES ★ ORNAMENTATION ★ ARCHITECTURAL ELEMENTS



ST MICHAEL'S CHURCH  
LEONARD STREET, LONDON, EC2A 4QX  
(OFF GREAT EASTERN ST) TUBE: OLD STREET, EXIT 4

PLEASE VIEW OUR FULL COLLECTION AT:  
[www.westlandlondon.com](http://www.westlandlondon.com)  
AT ST MICHAEL'S CHURCH

TEL: +44 (0)207 739 8094  
e-mail: [westland@westlandlondon.com](mailto:westland@westlandlondon.com)  
OPEN: MON - FRI 9-6. SAT 10-5.