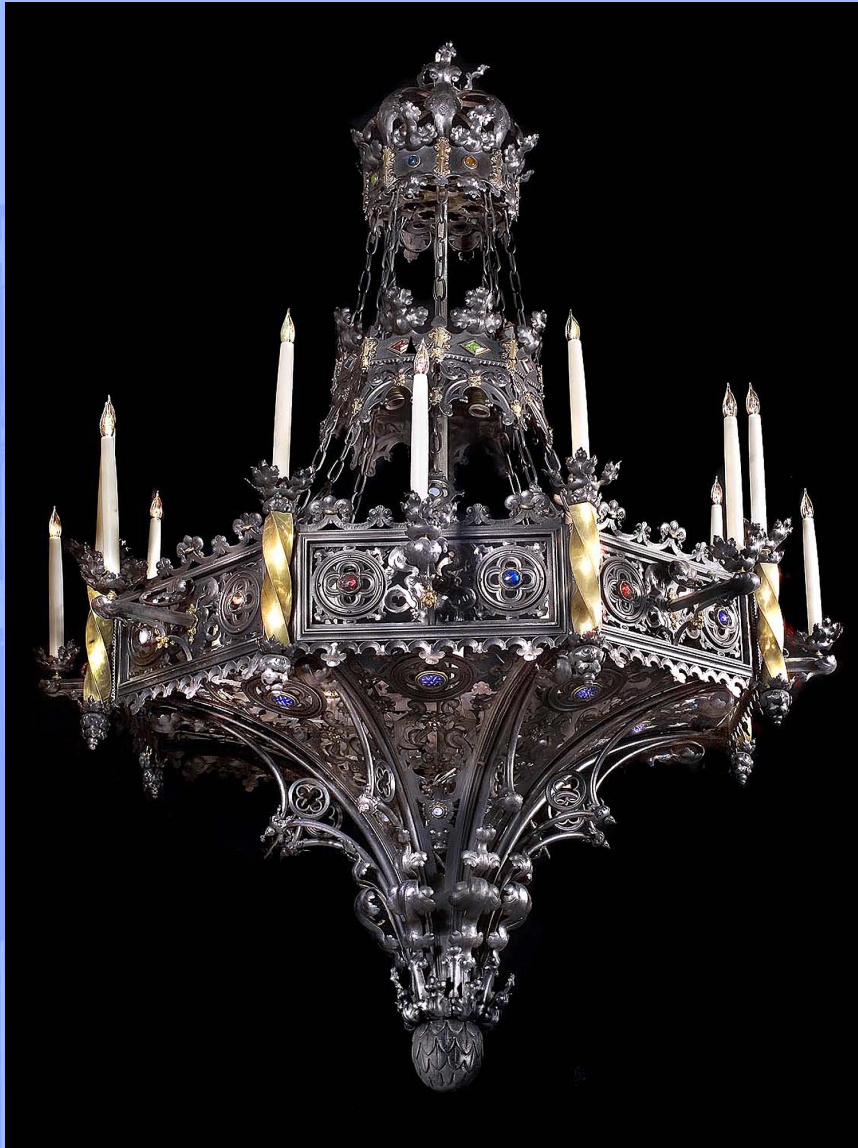


WESTLAND ★ LONDON EC2

ANTIQUE PRESTIGIOUS CHIMNEYPICES ★ FIREGRATES ★ ORNAMENTATION ★ ARCHITECTURAL ELEMENTS



8704. A magnificent large Neo Gothic Chandelier in wrought and embossed iron and brass. The Octagonal frame pierced with Gothic tracery and applied with faceted coloured glass cabochon and the candle holders in spiral brass. (photo before restoration).
Late 19th century.

Link to: [Antique chandeliers.](#)

Diameter
53.54"
136cm

Height
66.93"
170cm