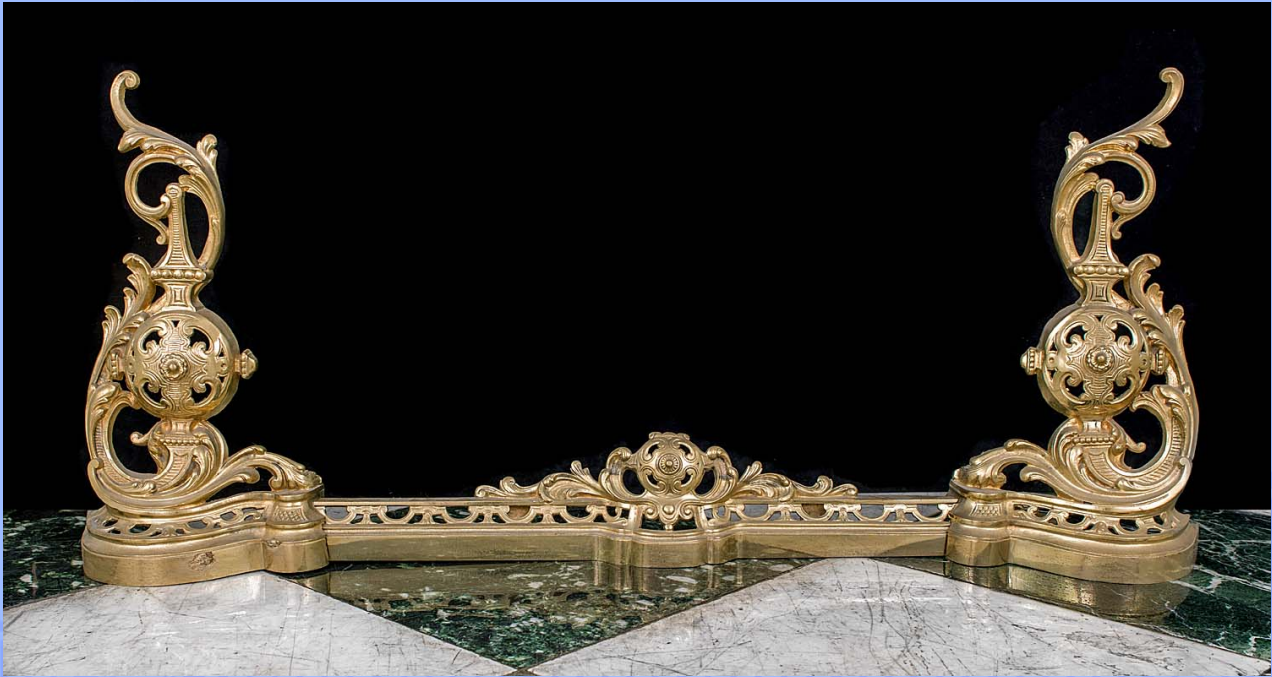


# WESTLAND ★ LONDON EC2

ANTIQUE PRESTIGIOUS CHIMNEYPICES ★ FIREGRATES ★ ORNAMENTATION ★ ARCHITECTURAL ELEMENTS



14035. An ornate brass antique fireplace fender the linking bar flanked by a pair of tall Rococo style brass chenets with a linking fender bar.  
French 19th century.

[Link to: Antique Fenders, Firescreens and Nursery Guards](#)

Width	Height	Depth
44.09"	16.54"	4.72"
112cm	42cm	12cm

# WESTLAND ★ LONDON EC2

ANTIQUE PRESTIGIOUS CHIMNEYPICES ★ FIREGRATES ★ ORNAMENTATION ★ ARCHITECTURAL ELEMENTS



ST MICHAEL'S CHURCH  
LEONARD STREET, LONDON, EC2A 4QX  
(OFF GREAT EASTERN ST) TUBE: OLD STREET, EXIT 4

PLEASE VIEW OUR FULL COLLECTION AT:  
[www.westlandlondon.com](http://www.westlandlondon.com)  
AT ST MICHAEL'S CHURCH

TEL: +44 (0)207 739 8094  
e-mail: [westland@westlandlondon.com](mailto:westland@westlandlondon.com)  
OPEN: MON - FRI 9-6. SAT 10-5.

# WESTLAND ★ LONDON<sub>EC2</sub>

ANTIQUÉ PRESTIGIOUS CHIMNEYPICES ★ FIREGRATES ★ ORNAMENTATION ★ ARCHITECTURAL ELEMENTS



ST MICHAEL'S CHURCH  
LEONARD STREET, LONDON, EC2A 4QX  
(OFF GREAT EASTERN ST) TUBE: OLD STREET, EXIT 4

PLEASE VIEW OUR FULL COLLECTION AT:  
[www.westlandlondon.com](http://www.westlandlondon.com)  
AT ST MICHAEL'S CHURCH

TEL: +44 (0)207 739 8094  
e-mail: [westland@westlandlondon.com](mailto:westland@westlandlondon.com)  
OPEN: MON - FRI 9-6. SAT 10-5.