

# WESTLAND ★ LONDON EC2

ANTIQUE PRESTIGIOUS CHIMNEYPICES ★ FIREGRATES ★ ORNAMENTATION ★ ARCHITECTURAL ELEMENTS



12880. A delightful, early and rare Royal Society for the Protection of Animals (RSPCA) charity collection box of a dog painted brown and seated on a green painted base. The dog looks to be carved in resin. A collection box hangs around his neck bearing the words 'The RSPCA Invites Your Support' and the green base states that 'A coin will ring the bell'. Happily the bell still rings when you drop a coin in the box. These collection boxes would have stood in doorways of shops to catch the eye of passers by. English, late 19th century.

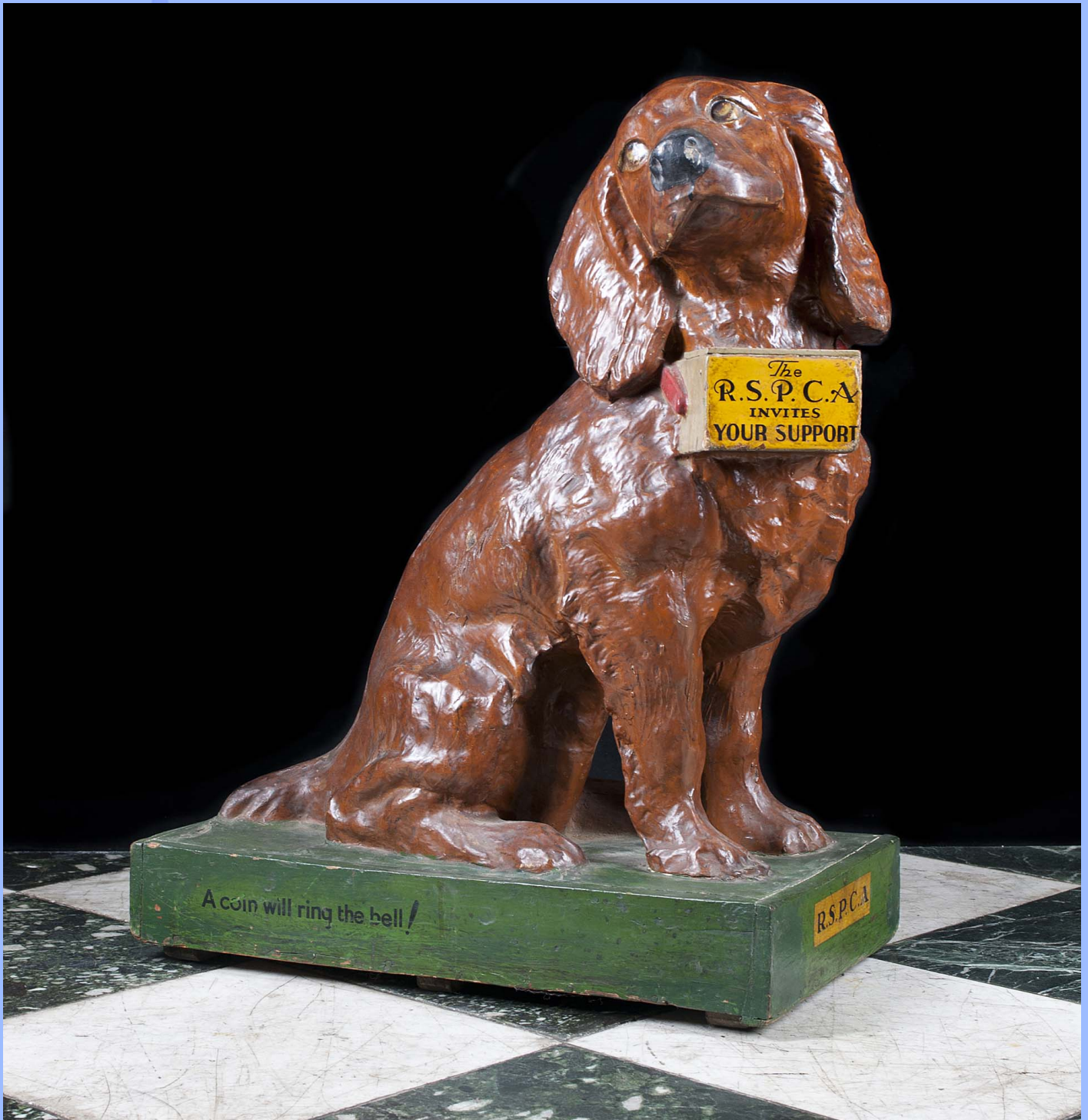
Notes: The Charity was founded in 1824 in a London coffee shop. It was the world's first animal welfare charity. and was originally called the SPCA - Society for the Prevention of Cruelty to Animals. Royal patronage followed in 1837 and Queen Victoria gave permission to add the royal R in 1840, making it the RSPCA as it is known worldwide today.

Link to: [decorative antiques and furnishings](#)

Width	Height	Depth
16.14"	30.71"	26.77"
41cm	78cm	68cm

# WESTLAND ★ LONDON EC2

ANTIQUE PRESTIGIOUS CHIMNEYPICES ★ FIREGRATES ★ ORNAMENTATION ★ ARCHITECTURAL ELEMENTS



ST MICHAEL'S CHURCH  
LEONARD STREET, LONDON, EC2A 4QX  
(OFF GREAT EASTERN ST) TUBE: OLD STREET, EXIT 4

PLEASE VIEW OUR FULL COLLECTION AT:  
[www.westlandlondon.com](http://www.westlandlondon.com)  
AT ST MICHAEL'S CHURCH

TEL: +44 (0)207 739 8094  
e-mail: [westland@westlandlondon.com](mailto:westland@westlandlondon.com)  
OPEN: MON - FRI 9-6. SAT 10-5.

# WESTLAND ★ LONDON EC2

ANTIQUE PRESTIGIOUS CHIMNEYPICES ★ FIREGRATES ★ ORNAMENTATION ★ ARCHITECTURAL ELEMENTS



Image not found.

ST MICHAEL'S CHURCH  
LEONARD STREET, LONDON, EC2A 4QX  
(OFF GREAT EASTERN ST) TUBE: OLD STREET, EXIT 4

PLEASE VIEW OUR FULL COLLECTION AT:  
[www.westlandlondon.com](http://www.westlandlondon.com)  
AT ST MICHAEL'S CHURCH

TEL: +44 (0)207 739 8094  
e-mail: [westland@westlandlondon.com](mailto:westland@westlandlondon.com)  
OPEN: MON - FRI 9-6. SAT 10-5.