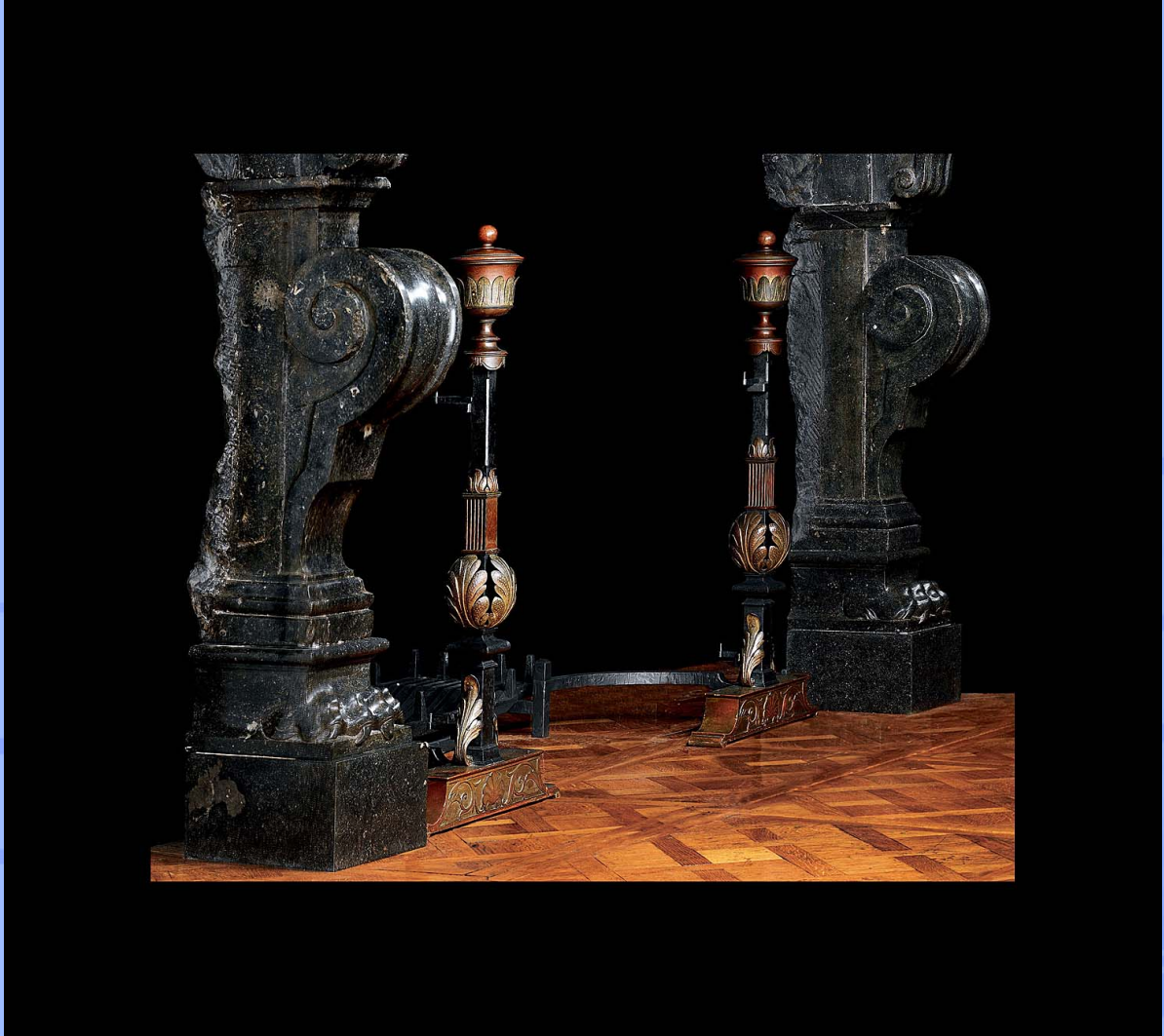


WESTLAND ★ LONDON EC2

ANTIQUE PRESTIGIOUS CHIMNEYPICES ★ FIREGRATES ★ ORNAMENTATION ★ ARCHITECTURAL ELEMENTS



12149. A pair of spectacular, large patinated bronze and iron andirons in the Louis XVI, Etruscan Revival manner. Napoleon annexed the Kingdom of Etruria in 1807. The large slender urn finials each shrouded with continuous full height separate delicate palmettes are topped with ball handles. Seated on tapering square shafts and descending into leaf fluted columns over large oval leaf shrouding and down to shaped pedestals, standing on wide elegantly scrolled bronze plinths with central shell and scrolled decoration. French, early 19th century.

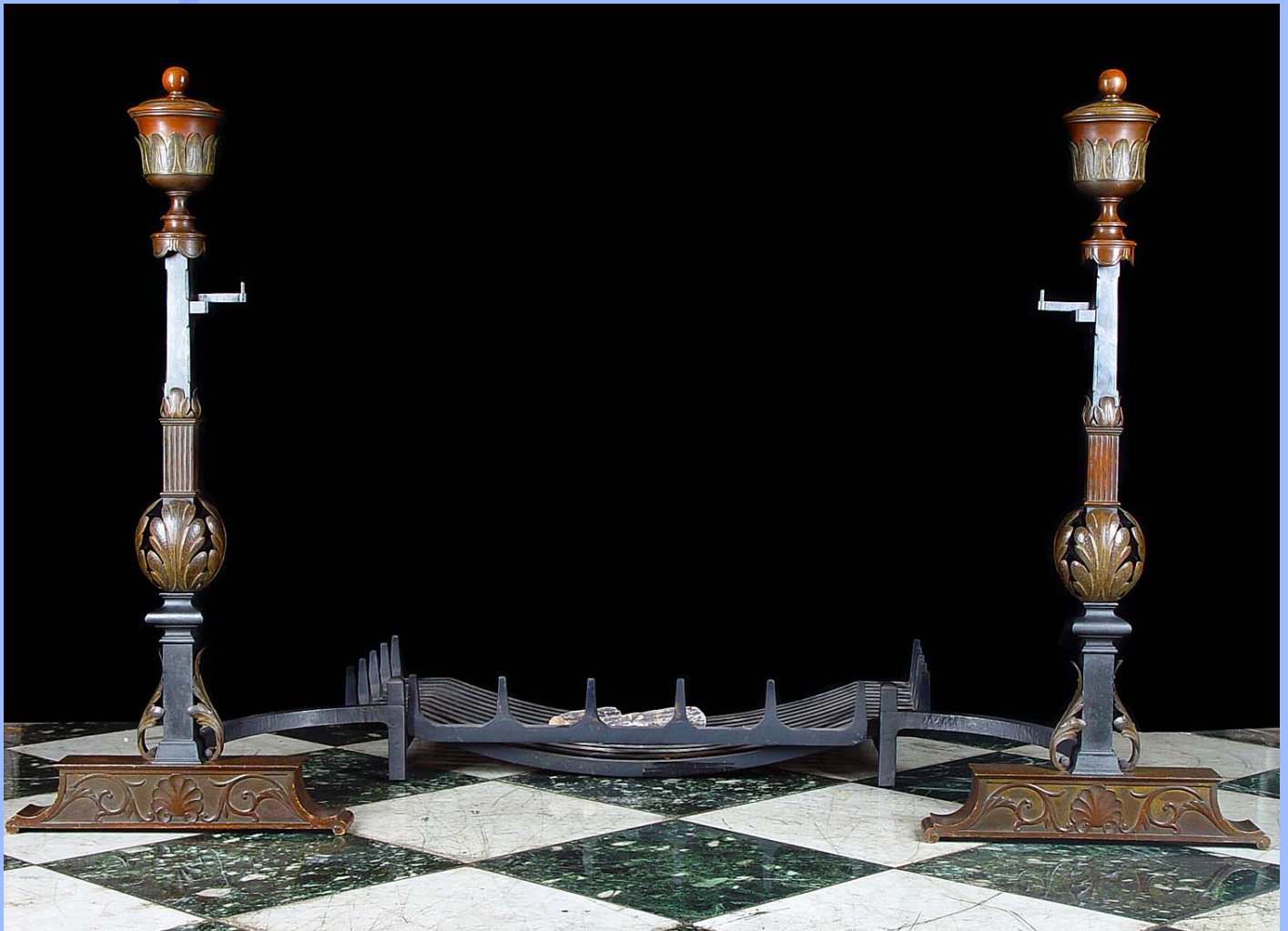
Width
18.50"
47cm

Height
41.73"
106cm

Depth
32.28"
82cm

WESTLAND ★ LONDON EC2

ANTIQUE PRESTIGIOUS CHIMNEYPieces ★ FIREGRATES ★ ORNAMENTATION ★ ARCHITECTURAL ELEMENTS



ST MICHAEL'S CHURCH
LEONARD STREET, LONDON, EC2A 4QX
(OFF GREAT EASTERN ST) TUBE: OLD STREET, EXIT 4

PLEASE VIEW OUR FULL COLLECTION AT:
www.westlandlondon.com
AT ST MICHAEL'S CHURCH

TEL: +44 (0)207 739 8094
e-mail: westland@westlandlondon.com
OPEN: MON - FRI 9-6. SAT 10-5.

WESTLAND ★ LONDON EC2

ANTIQUE PRESTIGIOUS CHIMNEYPieces ★ FIREGRATES ★ ORNAMENTATION ★ ARCHITECTURAL ELEMENTS



ST MICHAEL'S CHURCH
LEONARD STREET, LONDON, EC2A 4QX
(OFF GREAT EASTERN ST) TUBE: OLD STREET, EXIT 4

PLEASE VIEW OUR FULL COLLECTION AT:
www.westlandlondon.com
AT ST MICHAEL'S CHURCH

TEL: +44 (0)207 739 8094
e-mail: westland@westlandlondon.com
OPEN: MON - FRI 9-6. SAT 10-5.

WESTLAND ★ LONDON EC2

ANTIQUE PRESTIGIOUS CHIMNEYPIECES ★ FIREGRATES ★ ORNAMENTATION ★ ARCHITECTURAL ELEMENTS



Image not found.

ST MICHAEL'S CHURCH
LEONARD STREET, LONDON, EC2A 4QX
(OFF GREAT EASTERN ST) TUBE: OLD STREET, EXIT 4

PLEASE VIEW OUR FULL COLLECTION AT:
www.westlandlondon.com
AT ST MICHAEL'S CHURCH

TEL: +44 (0)207 739 8094
e-mail: westland@westlandlondon.com
OPEN: MON - FRI 9-6. SAT 10-5.