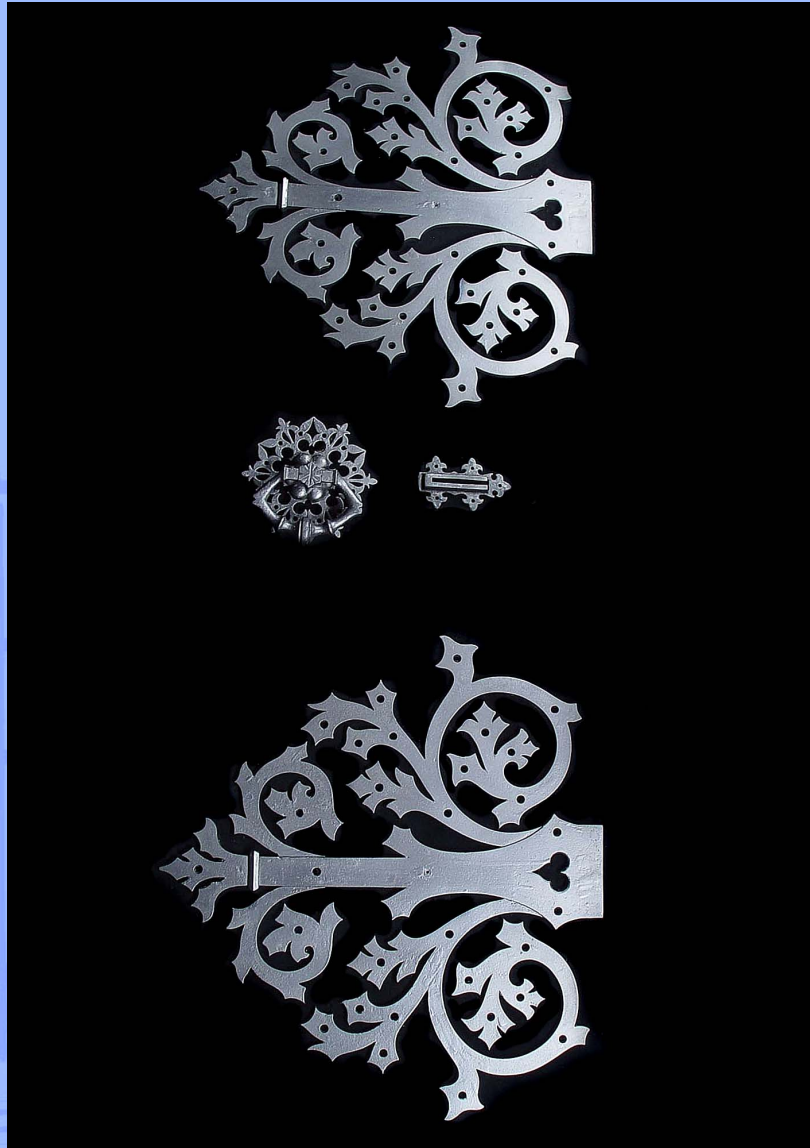


WESTLAND ★ LONDON EC2

ANTIQUE PRESTIGIOUS CHIMNEYPICES ★ FIREGRATES ★ ORNAMENTATION ★ ARCHITECTURAL ELEMENTS



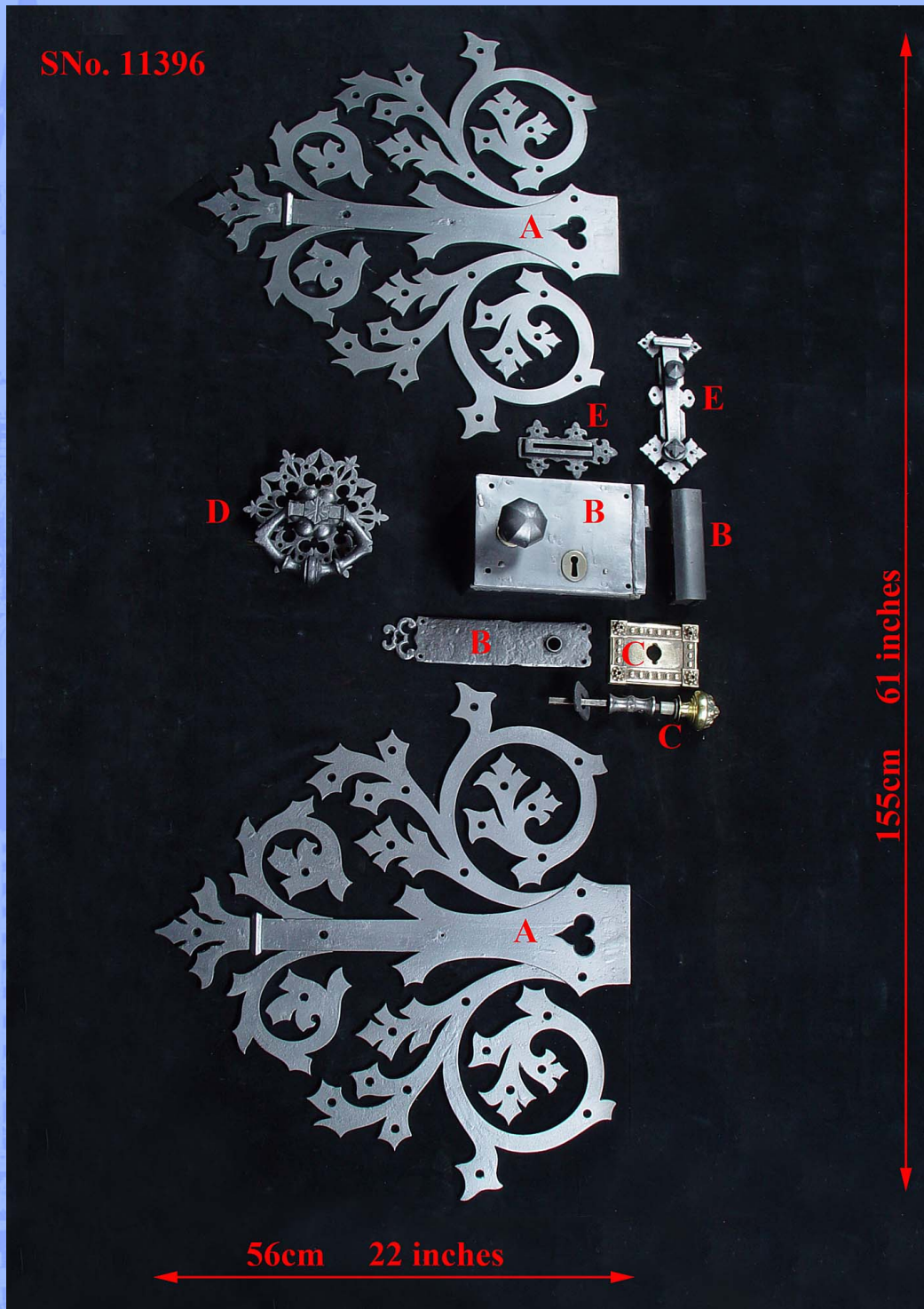
11396. A suite of Victorian iron door furniture in the ornate Neo Gothic manner, comprising two large scrolled foliate hinges, the door knocker, and chain catch
English, late 19th century.

Link to: [Antique Doors and Windows.](#)

Width	Height	Depth
22.44"	24.09"	0.35"
57cm	61.2cm	0.9cm

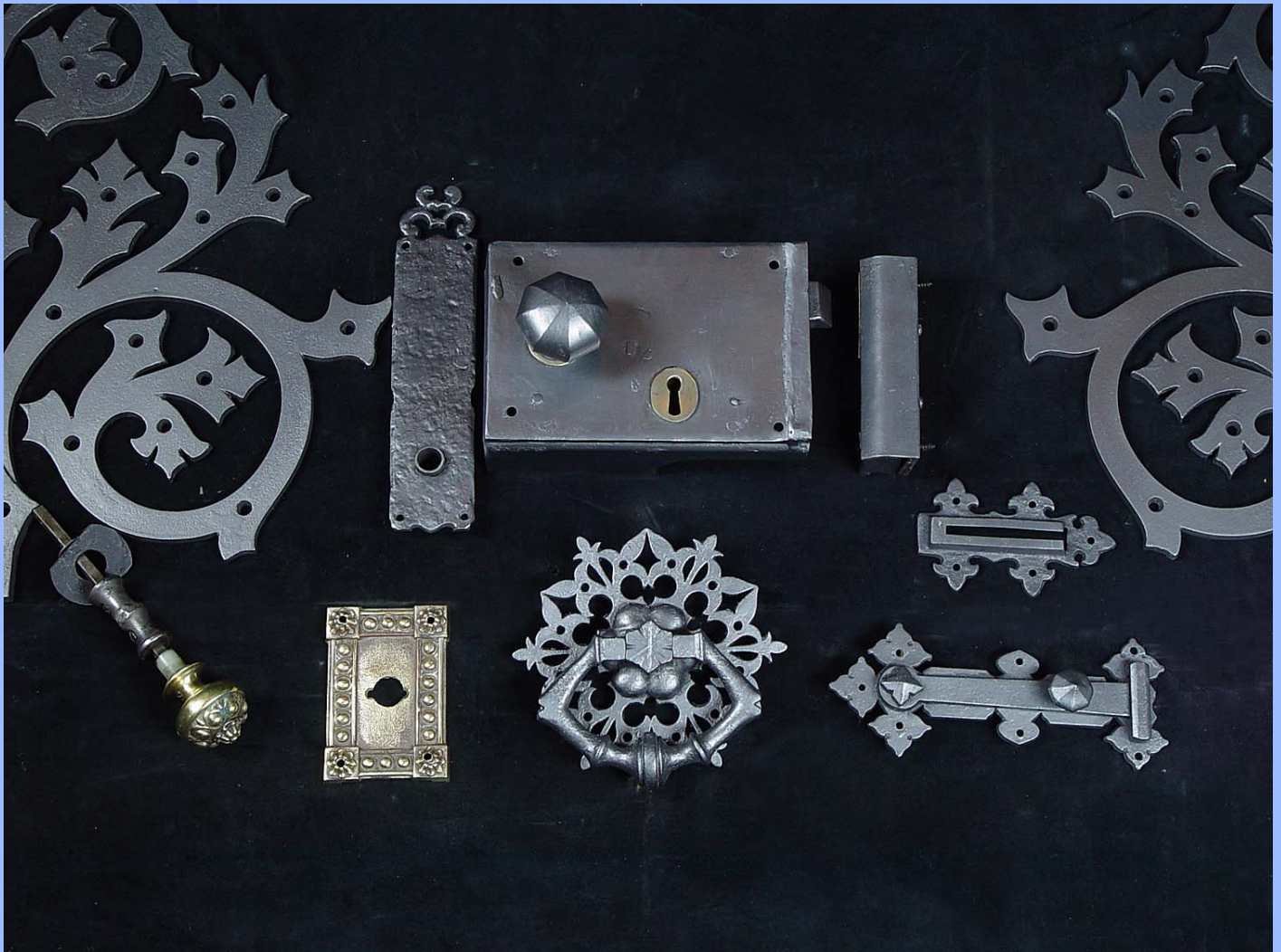
WESTLAND ★ LONDON EC2

ANTIQUE PRESTIGIOUS CHIMNEYPieces ★ FIREGRATES ★ ORNAMENTATION ★ ARCHITECTURAL ELEMENTS



WESTLAND ★ LONDON_{EC2}

ANTIQUE PRESTIGIOUS CHIMNEYPIECES ★ FIREGRATES ★ ORNAMENTATION ★ ARCHITECTURAL ELEMENTS



ST MICHAEL'S CHURCH
LEONARD STREET, LONDON, EC2A 4QX
(OFF GREAT EASTERN ST) TUBE: OLD STREET, EXIT 4

PLEASE VIEW OUR FULL COLLECTION AT:
www.westlandlondon.com
AT ST MICHAEL'S CHURCH

TEL: +44 (0)207 739 8094
e-mail: westland@westlandlondon.com
OPEN: MON - FRI 9-6. SAT 10-5.