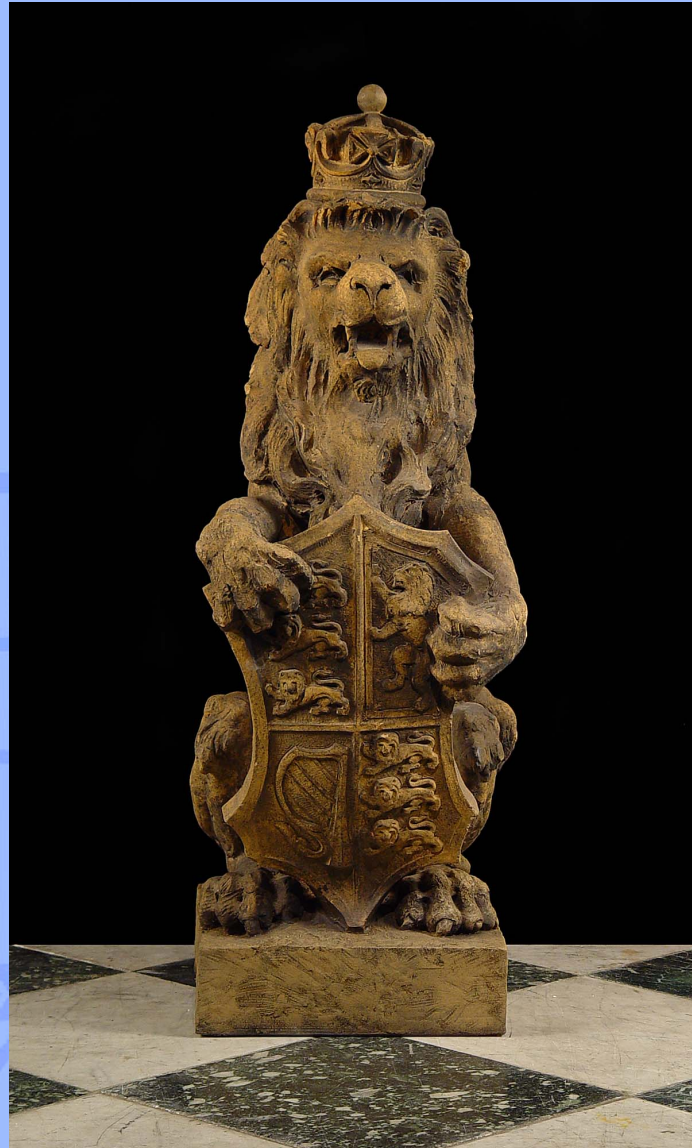


# WESTLAND ★ LONDON EC2

ANTIQUÉ PRESTIGIOUS CHIMNEYPICES ★ FIREGRATES ★ ORNAMENTATION ★ ARCHITECTURAL ELEMENTS



10664. A stoneware figure of a Crowned Sentinel Lion in the Baroque manner, seated holding a shield bearing the Royal Coat of Arms to his chest, on a cylindrical base. English, 19th Century.

Link to: [Antique sculptures, carvings, bronzes, plaques and tablets](#)

Width  
14.96"  
38cm

Height  
41.34"  
105cm

Depth  
18.50"  
47cm

# WESTLAND ★ LONDON EC2

ANTIQUE PRESTIGIOUS CHIMNEYPieces ★ FIREGRATES ★ ORNAMENTATION ★ ARCHITECTURAL ELEMENTS



ST MICHAEL'S CHURCH  
LEONARD STREET, LONDON, EC2A 4QX  
(OFF GREAT EASTERN ST) TUBE: OLD STREET, EXIT 4

PLEASE VIEW OUR FULL COLLECTION AT:  
[www.westlandlondon.com](http://www.westlandlondon.com)  
AT ST MICHAEL'S CHURCH

TEL: +44 (0)207 739 8094  
e-mail: [westland@westlandlondon.com](mailto:westland@westlandlondon.com)  
OPEN: MON - FRI 9-6. SAT 10-5.