

WESTLAND ★ LONDON EC2

ANTIQUÉ PRESTIGIOUS CHIMNEYPICES ★ FIREGRATES ★ ORNAMENTATION ★ ARCHITECTURAL ELEMENTS



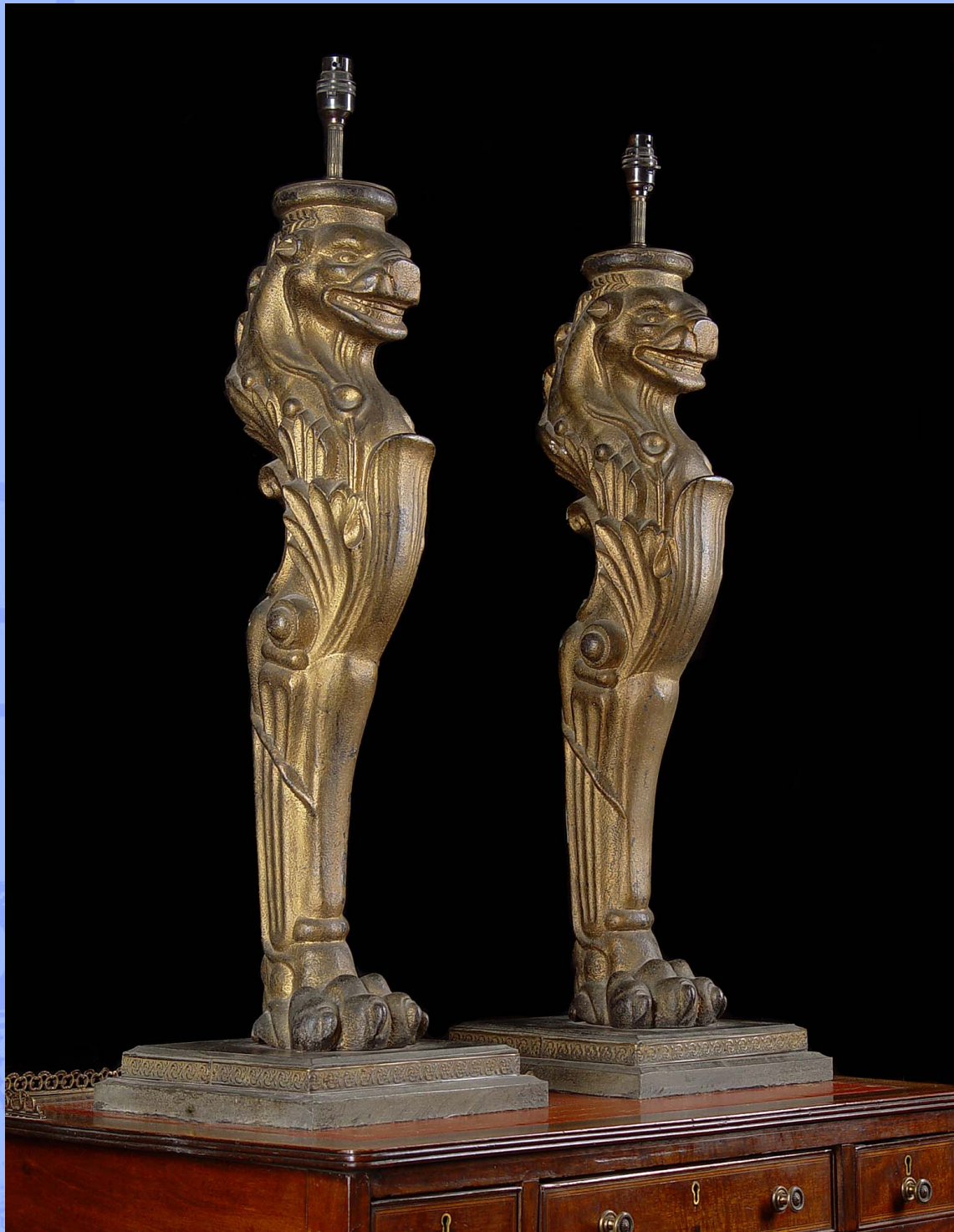
10468. A pair of gold patinated cast iron English Regency Greek Revival style lion monopodia on carved wood plinths, converted to lamps.
English, 19th century.

Link to: [Antique candelabras, candlesticks and lamps](#)

Height
29.92"
76cm

WESTLAND ★ LONDON EC2

ANTIQUÉ PRESTIGIOUS CHIMNEYPICES ★ FIREGRATES ★ ORNAMENTATION ★ ARCHITECTURAL ELEMENTS



ST MICHAEL'S CHURCH
LEONARD STREET, LONDON, EC2A 4QX
(OFF GREAT EASTERN ST) TUBE: OLD STREET, EXIT 4

PLEASE VIEW OUR FULL COLLECTION AT:
www.westlandlondon.com
AT ST MICHAEL'S CHURCH

TEL: +44 (0)207 739 8094
e-mail: westland@westlandlondon.com
OPEN: MON - FRI 9-6. SAT 10-5.

WESTLAND ★ LONDON EC2

ANTIQUE PRESTIGIOUS CHIMNEYPieces ★ FIREGRATES ★ ORNAMENTATION ★ ARCHITECTURAL ELEMENTS



ST MICHAEL'S CHURCH
LEONARD STREET, LONDON, EC2A 4QX
(OFF GREAT EASTERN ST) TUBE: OLD STREET, EXIT 4

PLEASE VIEW OUR FULL COLLECTION AT:
www.westlandlondon.com
AT ST MICHAEL'S CHURCH

TEL: +44 (0)207 739 8094
e-mail: westland@westlandlondon.com
OPEN: MON - FRI 9-6. SAT 10-5.