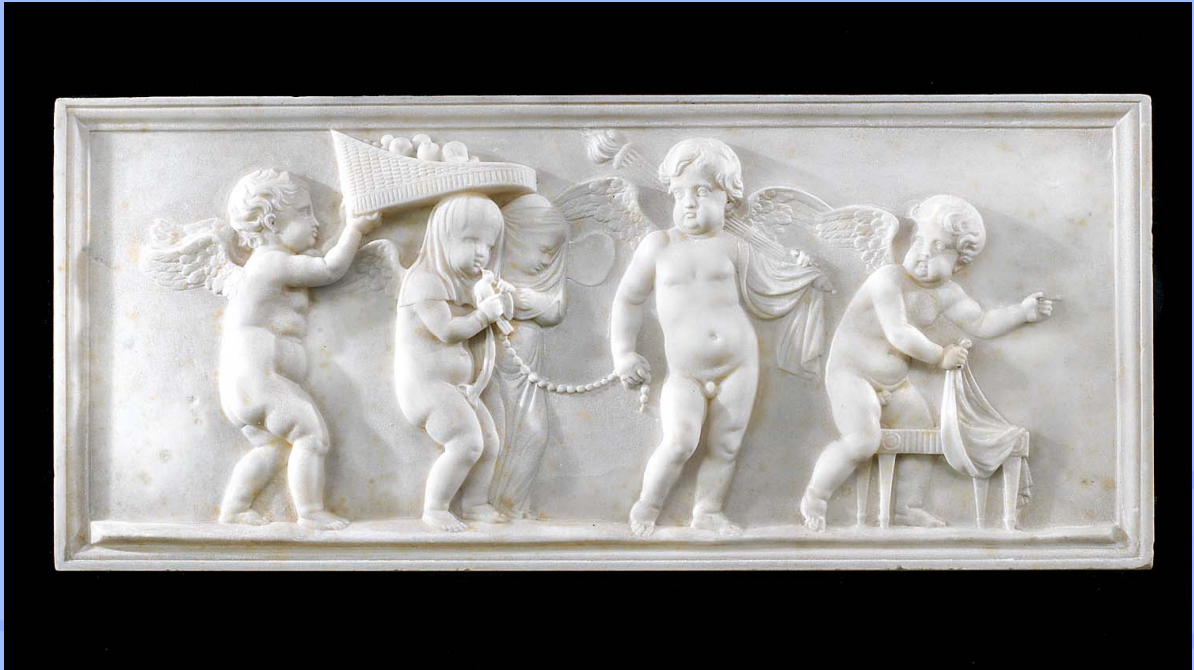


# WESTLAND ★ LONDON EC2

ANTIQUÉ PRESTIGIOUS CHIMNEYPICES ★ FIREGRATES ★ ORNAMENTATION ★ ARCHITECTURAL ELEMENTS



10307. A Regency statuary marble tablet representing the marriage of Cupid and Psyche. The couple is veiled and Cupid holds a dove whilst they are accompanied by three putti, holding a torch, a basket of fruit and a stool for their wedding ceremony. This is based on the onyx cameo made by Tryphon during the Roman Late Republican or Early Imperial Period (50–25 B.C.). This cameo once belonged to Peter Paul Rubens and was inventoried in both the collection of the Duke of Arundel and the Duke of Malborough in the 18th century.

Link to: [Antique sculptures, carvings, bronzes, plaques and tablets](#)

Width	Height	Depth
20.47"	8.90"	1.38"
52cm	22.6cm	3.5cm

# WESTLAND ★ LONDON EC2

ANTIQUE PRESTIGIOUS CHIMNEYPieces ★ FIREGRATES ★ ORNAMENTATION ★ ARCHITECTURAL ELEMENTS



ST MICHAEL'S CHURCH  
LEONARD STREET, LONDON, EC2A 4QX  
(OFF GREAT EASTERN ST) TUBE: OLD STREET, EXIT 4

PLEASE VIEW OUR FULL COLLECTION AT:  
[www.westlandlondon.com](http://www.westlandlondon.com)  
AT ST MICHAEL'S CHURCH

TEL: +44 (0)207 739 8094  
e-mail: [westland@westlandlondon.com](mailto:westland@westlandlondon.com)  
OPEN: MON - FRI 9-6. SAT 10-5.

# WESTLAND ★ LONDON<sub>EC2</sub>

ANTIQUE PRESTIGIOUS CHIMNEYPICES ★ FIREGRATES ★ ORNAMENTATION ★ ARCHITECTURAL ELEMENTS



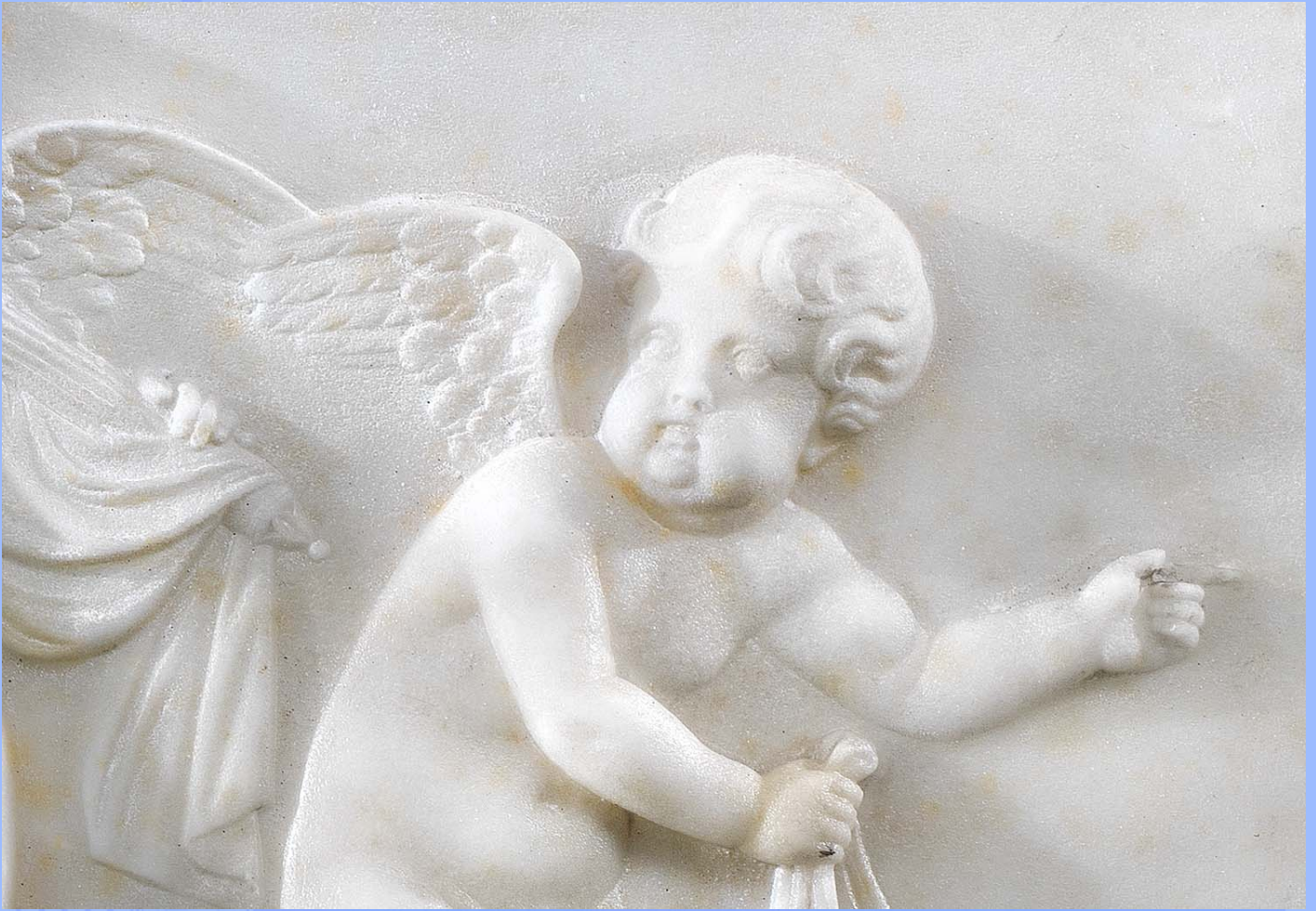
ST MICHAEL'S CHURCH  
LEONARD STREET, LONDON, EC2A 4QX  
(OFF GREAT EASTERN ST) TUBE: OLD STREET, EXIT 4

PLEASE VIEW OUR FULL COLLECTION AT:  
[www.westlandlondon.com](http://www.westlandlondon.com)  
AT ST MICHAEL'S CHURCH

TEL: +44 (0)207 739 8094  
e-mail: [westland@westlandlondon.com](mailto:westland@westlandlondon.com)  
OPEN: MON - FRI 9-6. SAT 10-5.

# WESTLAND ★ LONDON<sub>EC2</sub>

ANTIQUE PRESTIGIOUS CHIMNEYPICES ★ FIREGRATES ★ ORNAMENTATION ★ ARCHITECTURAL ELEMENTS



ST MICHAEL'S CHURCH  
LEONARD STREET, LONDON, EC2A 4QX  
(OFF GREAT EASTERN ST) TUBE: OLD STREET, EXIT 4

PLEASE VIEW OUR FULL COLLECTION AT:  
[www.westlandlondon.com](http://www.westlandlondon.com)  
AT ST MICHAEL'S CHURCH

TEL: +44 (0)207 739 8094  
e-mail: [westland@westlandlondon.com](mailto:westland@westlandlondon.com)  
OPEN: MON - FRI 9-6. SAT 10-5.