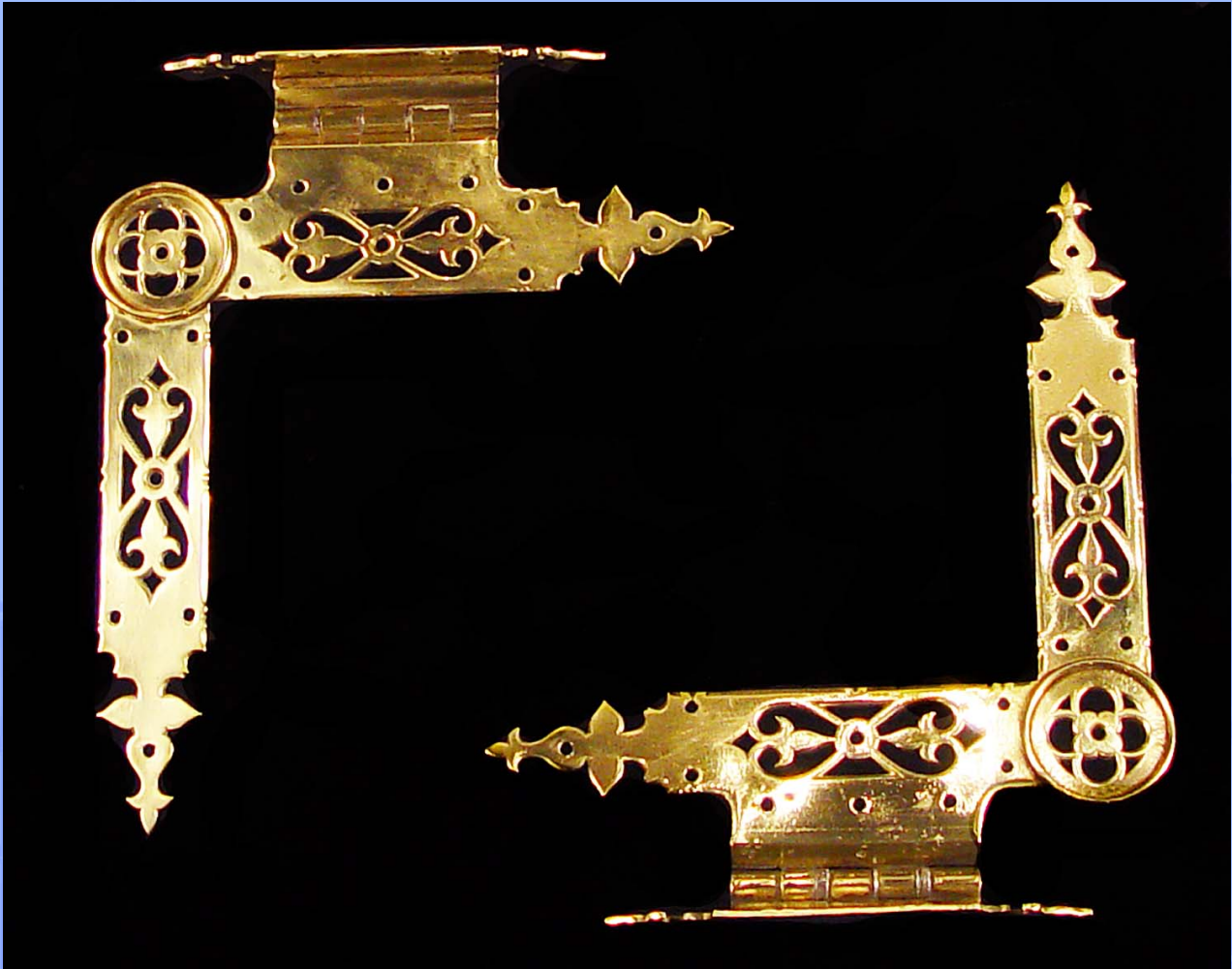


WESTLAND ★ LONDON EC2

ANTIQUE PRESTIGIOUS CHIMNEYPieces ★ FIREGRATES ★ ORNAMENTATION ★ ARCHITECTURAL ELEMENTS



10133. A pair of Gothic Revival brass hinges designed by Pugin, made by Hardman and coming from The New Palace of Westminster.

English mid 19th century.

Link to: [Antique Doors and Windows.](#)

Width
12.60"
32cm

Length
10.83"
27.5cm